

ID	Task Name	Duration	Start	Finish	'07					Jan 21, '07					Jan 28, '07												
					T	W	T	F	S	S	M	T	W	T	F	S	S	M	T	W	T						
1	Conduct front-end analysis to identify instructional goals	0 days	Wed 1/17/07	Wed 1/17/07																							
2	Conduct an instructional analysis	1 day	Wed 1/17/07	Wed 1/17/07																							
3	Classify instructional goals into domains (intellectual skill, verbal ir	1 day	Wed 1/17/07	Wed 1/17/07																							
4	Identify the major items learners must be able to perform in order t	1 day	Wed 1/17/07	Wed 1/17/07																							
5	Create a diagram which illustrates what the learners will be d	1 day	Wed 1/17/07	Wed 1/17/07																							
6	Identify what the learner will be doing step-by-step when	1 day	Wed 1/17/07	Wed 1/17/07																							
7	Identify the main steps	1 day	Wed 1/17/07	Wed 1/17/07																							
8	Identify the sub steps	1 day	Wed 1/17/07	Wed 1/17/07																							
9	Identify the subordinate skills	1 day	Wed 1/17/07	Wed 1/17/07																							
10	Identify the entry behaviors	1 day	Wed 1/17/07	Wed 1/17/07																							
11	Analyze learners and contexts	3 days	Thu 1/18/07	Mon 1/22/07																							
12	Identify target audience	1 day	Thu 1/18/07	Thu 1/18/07																							
13	Identify target audience age	1 day	Thu 1/18/07	Thu 1/18/07																							
14	Identify target audience entry behaviors	1 day	Thu 1/18/07	Thu 1/18/07																							
15	Identify target audience prior knowledge of the topic area	1 day	Thu 1/18/07	Thu 1/18/07																							
16	Identify target audience attitudes toward content and potentia	1 day	Thu 1/18/07	Thu 1/18/07																							
17	Identify target audience academic motivation (ARCS)	1 day	Thu 1/18/07	Thu 1/18/07																							
18	Identify target audience educational and ability levels	1 day	Thu 1/18/07	Thu 1/18/07																							
19	Identify target audience general learning preferences	1 day	Thu 1/18/07	Thu 1/18/07																							
20	Identify target audience attitudes toward training organization	1 day	Thu 1/18/07	Thu 1/18/07																							
21	Identify target audience group characteristics	1 day	Thu 1/18/07	Thu 1/18/07																							
22	Analyze performance context	1 day	Fri 1/19/07	Fri 1/19/07																							
23	Analyze managerial or supervisor support	1 day	Fri 1/19/07	Fri 1/19/07																							
24	Analyze physical aspects of the site	1 day	Fri 1/19/07	Fri 1/19/07																							
25	Analyze social aspects of the site	1 day	Fri 1/19/07	Fri 1/19/07																							
26	Analyze relevance of skills to workplace	1 day	Fri 1/19/07	Fri 1/19/07																							
27	Analyze learning context	1 day	Mon 1/22/07	Mon 1/22/07																							
28	Analyze compatibility of site with instructional requirements	1 day	Mon 1/22/07	Mon 1/22/07																							
29	Analyze adaptability of site to simulate workplace	1 day	Mon 1/22/07	Mon 1/22/07																							
30	Analyze adaptability of delivery approaches	1 day	Mon 1/22/07	Mon 1/22/07																							
31	Write performance objectives	3 days	Tue 1/23/07	Thu 1/25/07																							
32	Review goal statement	1 day	Tue 1/23/07	Tue 1/23/07																							

Project: Appendix A
Date: Tue 11/27/07

Task

Split

Progress

Milestone

Summary

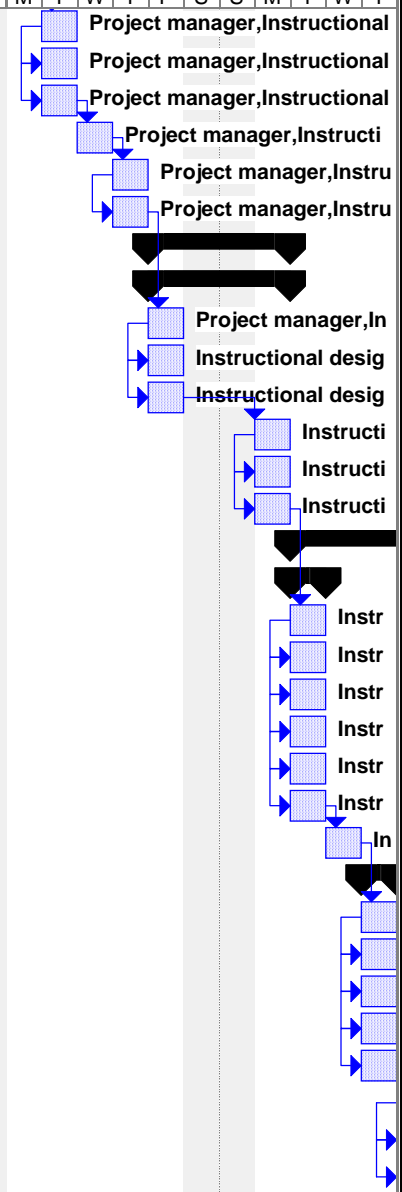
Project Summary

External Tasks

External Milestone

Deadline

ID	Task Name	Duration	Start	Finish	'07					Jan 21, '07					Jan 28, '07					
					T	W	T	F	S	S	M	T	W	T	F	S	S	M	T	W
33	Edit the goal to reflect the context	1 day	Tue 1/23/07	Tue 1/23/07																
34	Write terminal objective	1 day	Tue 1/23/07	Tue 1/23/07																
35	Write an objective for each step in the instructional analysis	1 day	Tue 1/23/07	Tue 1/23/07																
36	Write an objective for each sub-step under a major step in the inst	1 day	Wed 1/24/07	Wed 1/24/07																
37	Write objectives for all subordinate skills	1 day	Thu 1/25/07	Thu 1/25/07																
38	Write objectives for entry behaviors if some learners are likely not	1 day	Thu 1/25/07	Thu 1/25/07																
39	Develop assessment instruments	2 days	Fri 1/26/07	Mon 1/29/07																
40	Design criterion-referenced test	2 days	Fri 1/26/07	Mon 1/29/07																
41	Determine mastery levels	1 day	Fri 1/26/07	Fri 1/26/07																
42	Write test items	1 day	Fri 1/26/07	Fri 1/26/07																
43	Set mastery criteria	1 day	Fri 1/26/07	Fri 1/26/07																
44	Sequence items	1 day	Mon 1/29/07	Mon 1/29/07																
45	Write directions	1 day	Mon 1/29/07	Mon 1/29/07																
46	Develop instrument to measure performances, products, and	1 day	Mon 1/29/07	Mon 1/29/07																
47	Develop instructional strategies	4 days	Tue 1/30/07	Fri 2/2/07																
48	Select a delivery system	1 day	Tue 1/30/07	Tue 1/30/07																
49	Consider the goal, learner characteristics, learning and perfor	1 day	Tue 1/30/07	Tue 1/30/07																
50	Review the instructional analysis and identify logical clusters	1 day	Tue 1/30/07	Tue 1/30/07																
51	Plan the learning components that will be used in the instructi	1 day	Tue 1/30/07	Tue 1/30/07																
52	Choose the most effective student groupings for learning	1 day	Tue 1/30/07	Tue 1/30/07																
53	Specify effective media and materials that are within the rang	1 day	Tue 1/30/07	Tue 1/30/07																
54	Assign objectives to lessons and consolidate media selection	1 day	Tue 1/30/07	Tue 1/30/07																
55	Identify a teaching sequence and manageable groupings of conter	1 day	Wed 1/31/07	Wed 1/31/07																
56	Determine the size of the cluster, or the amount of informatio	1 day	Thu 2/1/07	Thu 2/1/07																
57	Consider the age level of the learners	1 day	Thu 2/1/07	Thu 2/1/07																
58	Consider the complexity of the material	1 day	Thu 2/1/07	Thu 2/1/07																
59	Consider the type of learning taking place	1 day	Thu 2/1/07	Thu 2/1/07																
60	Consider whether the activity can be varied, thereby focusing	1 day	Thu 2/1/07	Thu 2/1/07																
61	Consider the amount of time required to include all the events	1 day	Thu 2/1/07	Thu 2/1/07																
62	Cluster and sequence the content	1 day	Fri 2/2/07	Fri 2/2/07																
63	Prescribe the preinstructional, assessment, and follow-through lea	1 day	Fri 2/2/07	Fri 2/2/07																
64	Prescribe the content presentation and student participation comp	1 day	Fri 2/2/07	Fri 2/2/07																



Project: Appendix A Date: Tue 11/27/07	Task		Milestone		External Tasks	
	Split		Summary		External Milestone	
	Progress		Project Summary		Deadline	

ID	Task Name	Duration	Start	Finish	'07					Jan 21, '07					Jan 28, '07				
					T	W	T	F	S	S	M	T	W	T	F	S	S	M	T
65	Develop and select instructional materials	4 days	Mon 2/5/07	Thu 2/8/07															
66	Review the instructional strategy for each objective in each lesson	1 day	Mon 2/5/07	Mon 2/5/07															
67	Survey the literature and ask subject matter experts to determine \	1 day	Mon 2/5/07	Mon 2/5/07															
68	Determine whether new materials need to be designed or whether	1 day	Mon 2/5/07	Mon 2/5/07															
69	Review analysis of learning context	1 day	Tue 2/6/07	Tue 2/6/07															
70	Plan and write the instructional materials based on the instructione	1 day	Tue 2/6/07	Tue 2/6/07															
71	Review each completed lesson or learning session for clarity and l	1 day	Wed 2/7/07	Wed 2/7/07															
72	Write the accompanying instructions to guide the learners through	1 day	Wed 2/7/07	Wed 2/7/07															
73	Completion of online instructional demo	0 days	Wed 2/7/07	Wed 2/7/07															
74	Completion of downloadable, printable quick-reference guide	0 days	Wed 2/7/07	Wed 2/7/07															
75	Begin evaluation activities	1 day	Thu 2/8/07	Thu 2/8/07															
76	Design and conduct formative evaluations	1 day?	Wed 1/17/07	Wed 1/17/07															
77	Review instructional materials	1 day?	Wed 1/17/07	Wed 1/17/07															
78	Subject matter experts review instructional materials	1 day?	Wed 1/17/07	Wed 1/17/07															
79	Target audience specialist reviews instructional materials	1 day?	Wed 1/17/07	Wed 1/17/07															
80	Conduct on-to-one evaluation with learners	1 day?	Wed 1/17/07	Wed 1/17/07															
81	Select three target audience learners	1 day?	Wed 1/17/07	Wed 1/17/07															
82	Collect data	1 day?	Wed 1/17/07	Wed 1/17/07															
83	Make changes to instructional materials based on one-to-one eval	1 day?	Wed 1/17/07	Wed 1/17/07															
84	Conduct small-group evaluation	1 day?	Wed 1/17/07	Wed 1/17/07															
85	Select 8 to 20 learners with a variety of characteristics	1 day?	Wed 1/17/07	Wed 1/17/07															
86	Collect data	1 day?	Wed 1/17/07	Wed 1/17/07															
87	Make changes to instructional materials based on small-group eva	1 day?	Wed 1/17/07	Wed 1/17/07															
88	Conduct field trial	1 day?	Wed 1/17/07	Wed 1/17/07															
89	Select appropriate location for field evaluation	1 day?	Wed 1/17/07	Wed 1/17/07															
90	Select at least 30 learners	1 day?	Wed 1/17/07	Wed 1/17/07															
91	Collect data	1 day?	Wed 1/17/07	Wed 1/17/07															
92	Make changes to instructional materials based on field trial	1 day?	Wed 1/17/07	Wed 1/17/07															
93	Design and conduct summative evaluation	1 day?	Wed 1/17/07	Wed 1/17/07															
94	Select evaluators to conduct summative evaluation	1 day?	Wed 1/17/07	Wed 1/17/07															
95	Design evaluations	1 day?	Wed 1/17/07	Wed 1/17/07															
96	Document strengths and weaknesses of the instruction	1 day?	Wed 1/17/07	Wed 1/17/07															










Project: Appendix A Date: Tue 11/27/07	Task		Milestone		External Tasks	
	Split		Summary		External Milestone	
	Progress		Project Summary		Deadline	

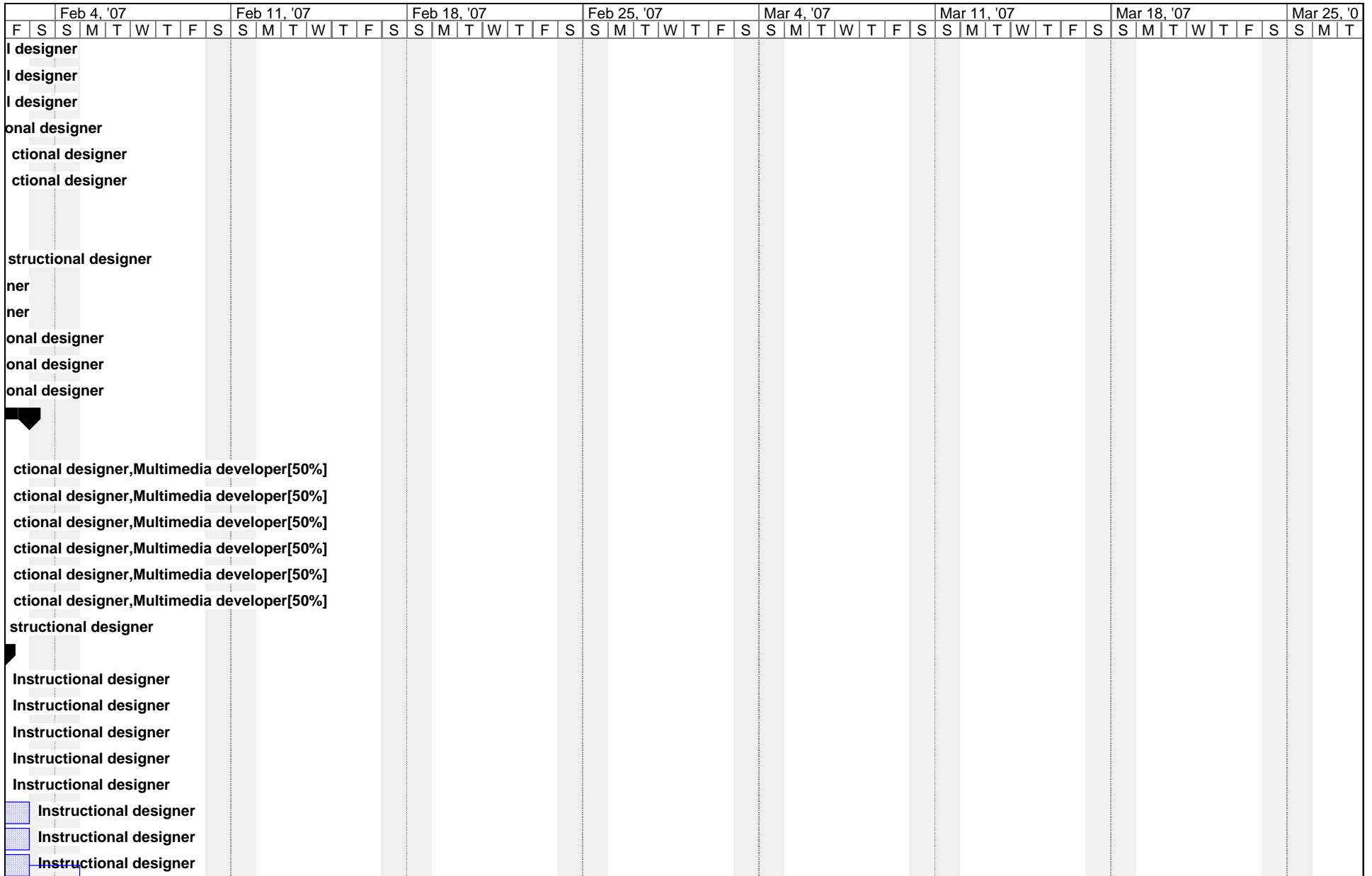
ID		Task Name	Duration	Start	Finish	'07					Jan 21, '07					Jan 28, '07				
						T	W	T	F	S	S	M	T	W	T	F	S	S	M	T
97		Design and write summative evaluation report	1 day?	Wed 1/17/07	Wed 1/17/07															



Project: Appendix A Date: Tue 11/27/07	Task		Milestone		External Tasks	
	Split		Summary		External Milestone	
	Progress		Project Summary		Deadline	



Project: Appendix A Date: Tue 11/27/07	Task		Milestone		External Tasks	
	Split		Summary		External Milestone	
	Progress		Project Summary		Deadline	



Project: Appendix A Date: Tue 11/27/07	Task		Milestone		External Tasks	
	Split		Summary		External Milestone	
	Progress		Project Summary		Deadline	



Project: Appendix A Date: Tue 11/27/07	Task		Milestone		External Tasks	
	Split		Summary		External Milestone	
	Progress		Project Summary		Deadline	

Feb 4, '07							Feb 11, '07							Feb 18, '07							Feb 25, '07							Mar 4, '07							Mar 11, '07							Mar 18, '07							Mar 25, '07											
F	S	S	M	T	W	T	F	S	S	M	T	W	T	F	S	S	M	T	W	T	F	S	S	M	T	W	T	F	S	S	M	T	W	T	F	S	S	M	T	W	T	F	S	S	M	T	W	T	F	S	S	M	T	W	T	F	S	S	M	T



Project: Appendix A Date: Tue 11/27/07	Task		Milestone		External Tasks	
	Split		Summary		External Milestone	
	Progress		Project Summary		Deadline	